

1007

SENTIMENTAL JOURNEY

Lew Brown, Bud Green & Benjamin Homer
Arr: Inge Sunde



Noteservice

SHOWBLOW

INSTRUMENTATION GUIDE

The works in the series are in five parts (plus optional parts for Bass Guitar and Drums) and will have the following instrumentation:

Instrumental parts:	Woodwind instruments:	Brass instruments:
Part 1, C	Flute, Oboe	
Part 1, Eb	Eb Clarinet	Eb Cornet
Part 1, Bb	Bb Clarinet, Soprano Saxophone	Bb Trumpet, Bb Cornet, Flugelhorn
Part 2, Bb	Bb Clarinet	Bb Trumpet, Bb Cornet, Flugelhorn
Part 2, Eb	Alto Saxophone, Alto Clarinet	Eb Alto Horn
Part 3, Eb	Alto Saxophone, Alto Clarinet	Eb Alto Horn
Part 3, F		F Horn
Part 3, Bb	Tenor Saxophone	Bb Tenor Horn, Baritone/Euphonium
Part 3, C (B.C.)		Trombone, Baritone/Euphonium (B.C.)
Part 4, Bb	Tenor Saxophone, Bass Clarinet	Bb Tenor Horn, Baritone/Euphonium
Part 4, C (B.C.)	Bassoon	Trombone, Baritone/Euphonium (B.C.)
Part 5, Eb	Baritone Saxophone	Eb Tuba (T.C.)
Part 5, Bb		Bb Tuba (T.C.)
Part 5, C (B.C.)	Bassoon	Tuba (B.C.)

Additional parts :

Bass Guitar (Part 5 w/chords)	Electric Bass, Acoustic String Bass Keyboards (Piano, Synthesizer etc.) or Guitar
Piano w/chords	
Drums	Drum Set (Battery) - for one player or separated (B.D., S.D., Cymbals, add. percussion) - for min. 3 players Bells, Xylophone or other melodic percussion can use Part 1,C

Sentimental Journey

B

Part 1

Part 2

Part 3

Part 4

Part 5

Drums

B \flat /F *B \flat /F* *F7 B \flat* *B \flat* *B \flat* *B \flat*

mp

Crash Cym. *Hi-Hat*

Part 1

Part 2

Part 3

Part 4

Part 5

Drums

mp

B \flat /C *C7* *F7* *B \flat* *B \flat 7* *E \flat* *B \flat /F* *B \flat /F* *F7 B \flat*

Crash Cym.

Sentimental Journey

C $\text{\textcircled{S}}$ Tutti (Flute/obo 8va)

Part 1 *mf*

Part 2 *mf*

Part 3

Part 4

Part 5 $\text{E}\flat$ $\text{B}\flat$ C

Drums Ride Cym.

D

Part 1 *f*

Part 2 *f*

Part 3 *f*

Part 4

Part 5 F Cm7/F Dm/F F7 $\text{B}\flat 6$ $\text{B}\flat 6$

Drums Crash Cym. Ride Cym.

Sentimental Journey

Part 1

Part 2

Part 3

Part 4

Part 5

Drums

Bb6 Bb/C C7 F7 F7#5 Bb Bb7 Eb Bb G7 G7#5

To Coda ⊕

E

Solo ad lib.

Part 1

Part 2

Part 3

Part 4

Part 5

Drums

C7 F7 Bb6 mf Solo ad lib. Bb

Bb/F Bb/F F7 Bb Bb Bb

Hi-Hat Crash Cym. Hi-Hat

Sentimental Journey

Part 1

Part 2

Part 3

Part 4

Part 5

Drums

Tutti

Solo ad lib.

Tutti

B \flat B \flat /C C7 F7 B \flat E \flat B \flat /F B \flat /F F7 B \flat

Crash Cym.

♩ CODA

Part 1

Part 2

Part 3

Part 4

Part 5

Drums

mf

f

mf

f

mf

f

Hi-Hat

Crash Cym.

Ride Cym.

(fill in)

B \flat /F B \flat /F F7 B \flat B \flat G7 G7#5 C7 F7 B \flat 6 B \flat 6

SENTIMENTAL JOURNEY

Lew Brown, Bud Green & Benjamin Homer
Arr.: Inge Sunde

EASYLAI D BACK SWING ♩ = 96

A (swing 8's) *mf*

B *mp*

C *Tutti* *mf*

D *f* **To Coda**

E *Solo ad lib.* *mf* *B \flat* *B \flat* *C7* *F7* *B \flat* *F7* *B \flat*

CODA *f*

Part 1 Bb

Clarinet
Cornet/Trp

SENTIMENTAL JOURNEY

1007

Lew Brown, Bud Green & Benjamin Homer
Arr.: Inge Sunde

EASY LAID BACK SWING ♩ = 96

A (swing 8's)

B

C

Tutti

D

To Coda

E

Solo ad lib.

CODA

Part 1 Eb

Eb Clarinet
Sopr. Cornet

1007

SENTIMENTAL JOURNEY

Lew Brown, Bud Green & Benjamin Homer
Arr.: Inge Sunde

EASY LAID BACK SWING ♩ = 96

A (swing 8's)

mf

B

mp

C Tutti

mf

D

f

To Coda

E

mf

Solo ad lib. G G A7 D7

G D7 G

CODA

f

Part 2 Bb

Clarinet
Cornet/Trp

SENTIMENTAL JOURNEY

1007

Lew Brown, Bud Green & Benjamin Homer
Arr.: Inge Sunde

EASY LAID BACK SWING ♩ = 96

2 (swing 8's)

A



B



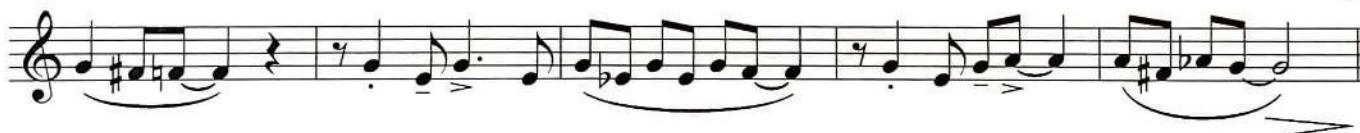
C %



D



To Coda ⊕



E



⊕ CODA



Part 2 Bb

Clarinet
Cornet/Trp

SENTIMENTAL JOURNEY

1007

Lew Brown, Bud Green & Benjamin Homer
Arr.: Inge Sunde

EASY LAID BACK SWING ♩ = 96

2 (swing 8's) A

B

C %

D

To Coda ⊕

E

⊕ CODA

Part 2 Eb

Alto Sax
Alto Horn

SENTIMENTAL JOURNEY

1007

Lew Brown, Bud Green & Benjamin Homer
Arr.: Inge Sunde

EASYLAI D BACK SWING ♩ = 96

(swing 8's)

A

2

mf

B

mp

C %

mf

D

f

To Coda ⊕

E

mf

⊕ CODA

mf

Part 3 Eb

Alto Sax
Alto Horn

SENTIMENTAL JOURNEY

1007

Lew Brown, Bud Green & Benjamin Homer
Arr.: Inge Sunde

EASY LAID BACK SWING ♩ = 96
(swing 8's)

A

mf

B

C §

D

f

To Coda ⊕

E

mf

⊕ CODA

mf *f*

Part 3 Bb

Tenor Sax
Baritone/Trb

SENTIMENTAL JOURNEY

1007

Lew Brown, Bud Green & Benjamin Homer
Arr.: Inge Sunde

EASY LAID BACK SWING ♩ = 96
(swing 8's)

A

B

C %

D

To Coda ⊕

E

⊕ CODA

SENTIMENTAL JOURNEY

Lew Brown, Bud Green & Benjamin Homer
Arr.: Inge Sunde

EASY LAID BACK SWING ♩ = 96
(swing 8's)

A 4

mf

B 2

2

C %

D

f

To Coda ⊕

E

mf

⊕ CODA

mf *f*

SENTIMENTAL JOURNEY

Lew Brown, Bud Green & Benjamin Homer

Arr.: Inge Sunde

EASY LAID BACK SWING ♩ = 96

(swing 8's)

mf

A 4

B 2

C %

D

f

To Coda ⊕

E

mf

⊕ CODA

mf f

Part 4 Bb

Tenor Sax
Bass Clar.
Baritone/Trb

SENTIMENTAL JOURNEY

1007

Lew Brown, Bud Green & Benjamin Homer
Arr.: Inge Sunde

EASY LAID BACK SWING ♩ = 96

(swing 8's)

A

B

C %

D

To Coda ⊕

E

Solo ad lib.

Tutti

Solo ad lib.

Tutti

⊕ CODA

SENTIMENTAL JOURNEY

1007

Lew Brown, Bud Green & Benjamin Homer

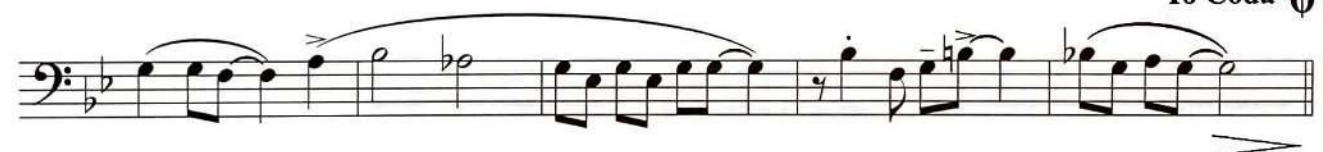
Arr.: Inge Sunde

EASY LAID BACK SWING ♩ = 96

(swing 8's)

**C** §**D**

To Coda ⊕

**E** Solo ad lib.

⊕ CODA



SENTIMENTAL JOURNEY

Lew Brown, Bud Green & Benjamin Homer
Arr.: Inge Sunde

EASY LAID BACK SWING ♩ = 96

(swing 8's)

A

B

C §

D

To Coda ⊕

E

⊕ CODA

SENTIMENTAL JOURNEY

Lew Brown, Bud Green & Benjamin Homer

Arr.: Inge Sunde

EASYLAI D BACK SWING ♩ = 96

(swing 8's)



mf

A



B



C %



D



f

To Coda ⊕

E



mf



⊕ CODA



mf

f

SENTIMENTAL JOURNEY

Lew Brown, Bud Green & Benjamin Homer
Arr.: Inge Sunde

EASY LAID BACK SWING ♩ = 96

(swing 8's)

A

B

C %

D

To Coda ⊕

E

⊕ CODA

SENTIMENTAL JOURNEY

1007

Lew Brown, Bud Green & Benjamin Homer
 Arr.: Inge Sunde

EASY LAID BACK SWING ♩ = 96 (swing 8's)

B \flat *mf*

A B \flat B \flat B \flat /C C7 F7 B \flat B \flat 7

E \flat B \flat /F B \flat /F F7 B \flat **B** B \flat B \flat

B \flat /C C7 F7 B \flat B \flat 7 E \flat B \flat /F B \flat /F F7 B \flat

C $\text{\textcircled{S}}$ E \flat B \flat C F Cm7/F Dm/F F7

D B \flat 6 B \flat 6 B \flat /C C7 F7 F7#5 B \flat B \flat 7 E \flat

f

To Coda $\text{\textcircled{C}}$ B \flat G7 G7#5 C7 F7 B \flat 6 B \flat /F B \flat /F F7 B \flat **E**

mf

B \flat B \flat /C C7 F7 B \flat E \flat B \flat /F B \flat /F F7 B \flat $\text{\textcircled{S}}$

$\text{\textcircled{C}}$ CODA

B \flat /F B \flat /F F7 B \flat B \flat G7 G7#5 C7 F7 B \flat 6 B \flat 6

mf *f*

SENTIMENTAL JOURNEY

Lew Brown, Bud Green & Benjamin Homer
Arr.: Inge Sunde

EASY LAID BACK SWING ♩ = 96 (swing 8's)

Hi-Hat S.D.
B.D. *mf*

A Crash Cym.

B Hi-Hat Crash Cym.

C Ride Cym. Crash Cym.

D Ride Cym. *f*

To Coda ⊕

E Hi-Hat Crash Cym. Hi-Hat *mf*

Crash Cym. ⊕

⊕ **CODA** Hi-Hat Crash Cym. Ride Cym. *mf* *f* (fill in)

SENTIMENTAL JOURNEY

Lew Brown, Bud Green & Benjamin Homer

Arr.: Inge Sunde

EASY LAID BACK SWING ♩ = 96 (swing 8's)

Chords: B^b B^b

mf

Section A

Chords: B^b B^b B^b/C C7 F7 B^b B^b7 E^b

Section B

Chords: B^b/F B^b/F F7B^b B^b B^b

Chords: B^b/C C7 F7 B^b B^b7 E^b B^b/F B^b/F F7 B^b

Section C

Chords: E^b B^b C

Sentimental Journey

D

F Cm7/F Dm/F F7 B^b6 B^b6

To Coda ⊕

B^b/C7 F7 F7#5 B^b B^b7 E^b B^b G7 G7#5 C7 F7 B^b6

E

B^b/F B^b/F F7 B^b B^b B^b B^b

mf

B^b/C C7 F7 B^b E^b B^b/F B^b/F F7 B^b

⌘
D.S. al Coda

⊕ CODA

B^b/F B^b/F F7 B^b B^b G7 G7#5 C7 F7 B^b6 B^b6

mf *f*